



Supplemental Sailing Instructions V1a



ISORA Offshore Series 2020

Re-Boot Race 4b – Offshore Race 1st Qualifying Race - Weighted at 1.1

Pwllheli To Pwllheli

Organised by the Clwb Hwyllo Pwllheli Sailing Club
www.pwllhelisailingclub.co.uk

Date	Number of Races	Start
Saturday 1 st August 2020	Offshore Qualifying Race	0900hrs

This Supplementary Information MUST be read in conjunction with the ISORA OFFSHORE SERIES 2020 General Sailing Instructions and the latest version of the ISORA Back To Boating Protocol.
For details see ISORA website – www.isora.org

On-Line Results by Sailwave





ISORA Offshore Race No 4b 2020

Supplemental Sailing Instructions V1a

1. Organisation.

- 1.1. The 2020 ISORA Offshore Race (Race No.4b in the Series) is organised by Pwllheli Sailing Club (CHPSC) and ISORA.
- 1.2. Enquiries, correspondence and entries should be sent to:- ISORA Secretary secretary@ISORA.org

2. Rules.

- 2.1. The Racing will be governed by the 'rules' as defined in *The Racing Rules of Sailing* (RRS) and the ISORA General Sailing Instructions 2020.
- 2.2. IRC rules part A, B & C shall apply to IRC racing.
RRS part 2 rules will be replaced with the right-of-way rules of the International Regulations for Preventing Collisions at Sea (IRPCAS) between the times of local sunset and sunrise; or government right-of-way rules if applicable. A scoring penalty (RRS44.3) will be applicable during these times.
- 2.3. Crew numbers shall be limited to the maximum number specified in the ISORA: Back To Boating Protocol. IRC Rule 22 4.2 shall not apply
- 2.4. The requirements of Category 3 plus Life Raft of the OFFSHORE SPECIAL REGULATIONS 2019-2020 apply to this race. Details of these are on the ISORA website.
- 2.5. In the event of conflict, this ISORA 2020 Supplemental Sailing Instructions (SSIs) will prevail. This changes RRS 63.7
- 2.6. At all times competitors will follow the ISORA: Back to Boating Protocol

3. Entries, Registration & Eligibility

- 3.1. Competitors for the 2020 ISORA Offshore Race must complete the entry form and pay the on-line race fee to ISORA – see the ISORA [web site](#)
- 3.2. The 2020 ISORA Offshore Race will provide racing for the ISORA Classes; Zero, One and Two or as amended.
- 3.3. Class Flags will be flown from the backstay of each competing yacht.
- 3.4. Yachts shall belong to or be chartered to and be under the control of a member of a yacht club affiliated to the IS or RYA or other equivalent national authority.
- 3.5. The Race Committee reserves the right to refuse any entry and/or to ask any boats to complete further undertaking or declarations before accepting their entry.

4. Measurement

- 4.1. A valid and current IRC rating certificates must be presented on request to the Sailing Committee.

5. Compliance with Class Rules; Certificates

- 5.1. The Race Committee may inspect or measure any boat or personal equipment, at any time.

6. Changes in Sailing Instructions

- 6.1. Any change to the Supplemental Sailing Instructions or General Sailing Instructions will be posted on the ISORA webs Site by 18.30hrs on the day before it will take effect.

7. Schedule of Races.

- 7.1. The race schedule is shown on the front page of this Supplemental Sailing Instructions.
- 7.2. There will be one start for all classes
- 7.3. The Race Officer may decide to have separate starts for each class or a group of classes. This will be announced by VHF (Channel 17) and flags.
- 7.4. The type of racing will be a long Offshore Race and the course will be announced on the web site on the Friday prior to the Race.

8. Time of Start

- 8.1. The race start times will be as shown on the front page of this SSIs or as amended
 - 08.55 Warning signal - Class flags (Numerals 1 & 2) hoisted
 - 08.56 Preparatory Signal - Blue Peter hoisted
 - 08.59 Blue Peter down
 - 09.00 Start – Class flags down



8.2. The start may be broadcast on VHF Channel 17

9. Registration of Crew – ISORA Crew Manager

- 9.1. Skippers must register the following details, for all crew members, on the 'ISORA Crewmanager App':
- 9.2. Crew Name and mobile phone number
- 9.3. Shore Contact Name and phone number for each crew member
- 9.4. The information will only be used:
- 9.5. for safety purposes and in an instance of an emergency.
- 9.6. if required in association with the ISORA Covid Protocol and Contact Tracing

10. STARTING LINE

- 10.1. The starting line is a transit of the orange pole on the CHPSC Bridge, a white mast with an orange top section on the foreshore and the ODM (mark O) The seaward end of the line is bounded by an ODM (mark 0). Boats cross this line in the direction of the first mark of the course, to start.

11. THE COURSE

- 11.1. Weather permitting the course will be about 50 miles long. The course may be as follows:
STARTING LINE at Pwllheli as defined in this Supplemental Sailing Instruction
TBA
FINISH LINE at Pwllheli as defined in this Supplemental Sailing Instruction
- 11.2. The Course will be and published on the ISORA web site and may be communicated to all entrants by text and email by 18.30hrs on the day before the start.
- 11.3. The course will be confirmed afloat to the competitors on VHF CH 17 before the start.

12. Waypoints

- 12.1. Waypoints may be used as marks. If so, Rule 28 will be amended accordingly in accordance with the RYA / RORC Guidance – "Racing Around Waypoints" See website for details
- 12.2. Evidence of rounding the "virtual" mark must be taken and may be requested by the Race Officer. This evidence may include:
- 12.3. Photographic (iPhone or similar) evidence of the yacht's GPS showing its position at the mark.
- 12.4. Yacht's chart plotter track showing the yacht rounding the "virtual" mark. This must be transmittable to ISORA by email.
- 12.5. The onus of proof of having rounded the WAYPOINT mark will be with each yacht.

13. ISORA YB Tracker

- 13.1. All boats entered in the race will be fitted with the YB Tracker. The Skipper, accepting the units will be responsible for the replacement cost of the unit in a situation that the unit gets lost or damaged.
- 13.2. The units can be collected from Mark Thompson at CHPSC on Friday evening at 19.00.
- 13.3. In order to set up the units all boats who are entered must declare that they are racing by 12.00 on Thursday 30th July. This declaration is a text to +447966490414 stating that "Boat name" will be racing on Saturday. This is critical for the efficient running of the tracking system.
- 13.4. The trackers must be returned to Mark Thompson at CHPSC immediately after the race.
- 13.5. The race progress can be tracked by following the YB Tracking app for iPhones and Android. On downloading the app, the "ISORA 2020 Series".
- 13.6. Any queries relating to the ISORA Trackers should be dealt with by contacting Mark Thompson at CHPSC +447966490414.

14. SHORTENED RACES

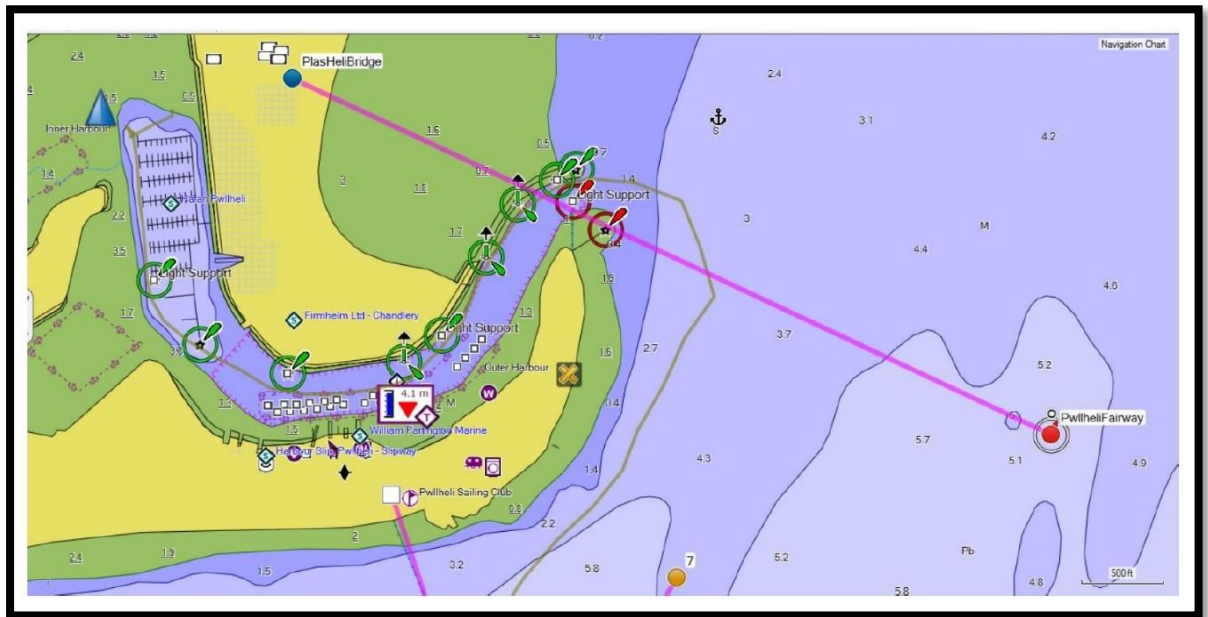
- 14.1. The race may be shortened at a mark and will be signalled by calling the fleet on **VHF Ch 17** If the fleet doesn't finish a race or shortened race, the race committee may take the result from the mark at which one third or more of the fleet round from the direction of the previous mark.

15. FINISH LINE

- 15.1. The finish line shall be the transit between the Pwllheli Fairway Buoy and the Bridge at Plas Heli the Welsh National Sailing Academy and Events Centre with a bearing of 297deg magnetic or a back bearing to the Fairway of 117deg magnetic (see chart below).
- 15.2. Pwllheli Fairway Buoy (Iso.2s) located N52 53.000 W4 22.900
- 15.3. Plas Heli Bridge located - N52 53.336 W4 24.230



- 15.4. Please note this is not the usual line used as the start in Pwllheli.
- 15.5. The leading competitor must telephone the race officer when about one hour from the finish line on 07855706285
- 15.6. When approximately 10 minutes from the finish line yachts shall advise of their approach on VHF Ch 17 call sign 'ISORA Finish'. Please note that the finisher may only have a handheld radio and you may not receive an acknowledgment to the first contact. There may be no sound signal at the finish. The Finisher may radio confirmation of the finish.
- 15.7. The finish time of your boat and the name of the boat ahead and behind shall be recorded. Also, the time of rounding each mark should be recorded in the log by each boat and text to ISORA at 07855706285 as soon as possible after the race. At night sail numbers should be illuminated when crossing the finish line and the sail number radioed to the finisher on VHF Ch 17 call sign 'ISORA Finish'.
- 15.8. The above procedure is deemed to be a "Declaration" that the yacht has completed the course in accordance with the sailing instructions and has complied fully with the Safety requirements.
- 15.9. While there is no time limit for the ISORA race the finisher may not be in attendance at the finish line for later finishers.



16. RETIREMENTS

- 16.1. Text ISORA on 07855706285 and 07977929116.
- 16.2. For safety it is recommended to also inform the Coastguard by VHF.

17. Advertising

- 17.1. The racing will be a Category C event.
- 17.2. All yachts may be presented with a sponsor's flag or decals, which must be displayed at all times (if provided).

18. Scoring System

- 18.1. Scoring will be in accordance with Appendix A of the Racing Rules of Sailing and for ISORA using the ISORA series scoring.
- 18.2. This race is weighted at 1.1 (see 2020 Section 9 General Sailing Instructions)

19. Risk Statement

- 19.1. **THE DECISION WITH REGARD TO STARTING AND CONTINUING A RACE LIES DEFINATIVELY WITH THE SKIPPER OF EACH BOAT AS HE / SHE ALONE IS AT ALL TIMES RESPONSIBLE FOR THE SAFETY OF HIS / HER OWN BOAT AND CREW**
- 19.2. RRS Rule 4 of the Racing Rules of Sailing states: "The responsibility for a boat's decision to participate in a race or to continue racing is hers alone."
- 19.3. Sailing is by its nature an unpredictable sport and therefore inherently involves an element of risk. By taking part in the event, each competitor agrees and acknowledges that:



- (a) They are aware of the inherent element of risk involved in the sport and accept responsibility for the exposure of themselves, their crew and their boat to such inherent risk whilst taking part in the event;
- (b) They are responsible for the safety of themselves, their crew, their boat and their other property whether afloat or ashore;
- (c) They accept responsibility for any injury, damage or loss to the extent caused by their own actions or omission;
- (d) Their boat is in good order, equipped to sail in the event and they are fit to participate;
- (e) The provision of a race management team, patrol boats and other officials and volunteers by the event organiser does not relieve them of their own responsibilities;
- (f) The provision of patrol boat cover is limited to such assistance, particularly in extreme weather conditions, as can be practically provided in the circumstances;
- (g) They are responsible for ensuring that their boat is equipped and seaworthy so as to be able to face extremes of weather; that there is crew sufficient in number, experience and fitness to withstand such weather; and that the safety equipment is properly maintained, stowed and in date and is familiar to the crew.
- (h) Their boat is adequately insured, with cover of at least £3,000,000 against third party claims.

20. Safety

20.1. Competitors must adhere to the requirements of **Category 3 plus Life Raft** of World Sailing Offshore Special Regulations 2020 for this race. Details of these are on the ISORA website.

20.2. Competitors must adhere to the ISORA Back to Boating Protocol

21. Personal Safety

21.1. RRS 1.2, 40 shall apply and it is the sole responsibility of the skipper to ensure that Life Jackets/Harness lines are carried for each member of the crew.

22. Après Sail

22.1. There will not be any organised Après Sail, though the Plas Heli deck will be open for bookings

