



AVERYcrest
SKI CHALETS MERIBEL



2017 Sailing Instructions

Supplementary Information

Race 14 Pwllheli – Dun Laoghaire

Sailed under the burgee the **National Yacht Club**

Saturday 9th September 2017

This Supplementary Information MUST be read in conjunction with the ISORA Avery Crest OFFSHORE SERIES 2017 NOTICE OF RACE & GENERAL CONDITIONS. For details see [ISORA website](#)

SAFETY CATEGORY

The requirements of **Category 3 Plus Liferaft** of ISAF Offshore Special Regulations 2016-2017 are recommended for this race. Details of these are on the ISORA website.

THE DECISION WITH REGARD TO STARTING AND CONTINUING A RACE LIES ABSOLUTELY WITH THE SKIPPER OF EACH BOAT AS HE / SHE ALONE IS AT ALL TIMES RESPONSIBLE FOR THE SAFETY OF HIS / HER OWN BOAT AND CREW

Except when otherwise stated in the Sailing Instructions, the rules of RRS Part 2 shall not apply between the times of local sunset and sunrise and shall be replaced with the corresponding rules of IRPCAS (INTERNATIONAL Regulations FOR Prevention Collisions At Sea).

TIME OF START FOR ALL CLASSES

- 08.25 Warning signal - Class flags (Numerals 1 & 2) hoisted
- 08.26 Preparatory Signal - Blue Peter hoisted
- 08.29 Blue Peter down
- 08.30 Start – Class flags down

The start may be broadcast on VHF Channel 37 (M1)

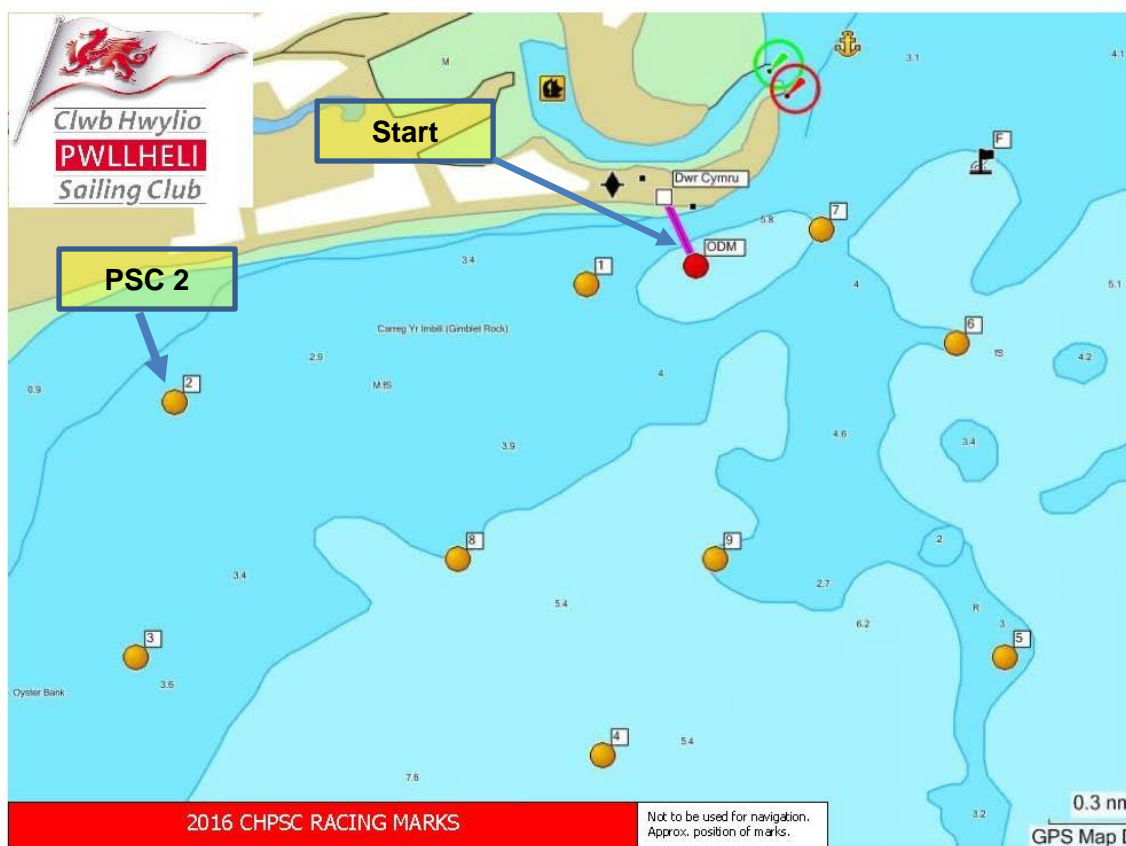
STARTING LINE

The Start Line is a transit of the orange pole on the PSC Bridge, a white mast with an orange top section on the foreshore and the ODM (mark O). The seaward end of the line is bounded by an ODM (mark O). Boats shall cross this line in the direction of the first mark of the course, to start. Outer Distance Mark (mark O) is a yellow buoy 52° 52.747'N 04° 23.960'W

In light winds the starter will stand down 10 minutes after the start. After that, **ODM (mark O)** will be a mark on the course and all boats must leave it to (P).

THE COURSE (approx. 80 miles)

- **Start – Pwllheli**
- **PSC 2 (P) coordinates are : 52° 52.400'N 04° 25.580'W - See the attached chart**
- Course to be decided
- **Finish – Dun Laoghaire**



The course may be approximately 80 miles long. The course will be posted on the ISORA website, texted and emailed to all entries and may be available on Friday morning 8th September. The course shall be broadcast on VHF Channel 37 (M1) before the start.

WAYPOINT MARKS.

Waypoints may be used as marks. If so, Rule 28 will be amended accordingly in accordance with the RYA / RORC Guidance – “Racing Around Waypoints” See website for details

Evidence of rounding the “virtual” mark must be taken and may be requested by the Race Officer. This evidence may include:

- Photographic (iPhone or similar) evidence of the yacht’s GPS showing its position at the mark.
- Yacht’s chart plotter track showing the yacht rounding the “virtual” mark. This must be transmittable to ISORA by email.

The onus of proof of having rounded the WAYPOINT mark will be with each yacht.

Avery Crest YB TRACKER

All boats entered in the race will be fitted with the Avery Crest YB Tracker. The Skipper will be responsible to cover the replacement cost of the unit in a situation that the unit gets lost or damaged.

The units can be collected from Peter Ryan at PSC on Friday evening at 19.00.

In order to set up the units all boats who are entered must declare that they are racing by Wednesday 6th September. This declaration is a text to +353 87 2545037 stating that "Boat name" will be racing on Saturday. This is critical for the efficient running of the tracking system.

The trackers must be returned to Peter Ryan in NYC immediately after the race.

The tracking can be followed on the YB Tracking app for iPhones and Android. On downloading the app, the "ISORA Avery Crest 2016 Series" is purchased. This will give the purchaser full access to all races in the Series. ISORA will benefit from the sale of this app.

Any queries relating to the Avery Crest Trackers should be dealt with by contacting Peter Ryan +353 87 2545037.

FINISH LINE

The finish line shall be between the pier ends at the Dun Laoghaire Harbour entrance.

When approximately 10 minutes from the finish line yachts shall advise of their approach on VHF Ch 37 (M) call sign 'ISORA Finish'. Please note that the finisher will only have a handheld radio and you may not receive an acknowledgment. There will be no sound signal at the finish. The Finisher may radio confirmation of the finish.

The finish time of your boat and the name of the boat ahead and behind shall be recorded. Also the time of rounding each mark should be recorded in the log by each boat. The time of the finish or, in the case of a retirement, the time of rounding the last mark shall be text to **ISORA** at **+353 87 2545037** as soon as possible after the race. At night sail numbers radioed to the finisher on VHF Ch 37 (M) call sign 'ISORA Finish'.

The above procedure is mandatory and deemed to be a "Declaration" that the yacht has completed the course in accordance with the sailing instructions and has complied fully with the Safety requirements.

There is no time limit for the ISORA race. The finisher may not be in attendance at the finish line for later finishers.

RETIREMENTS

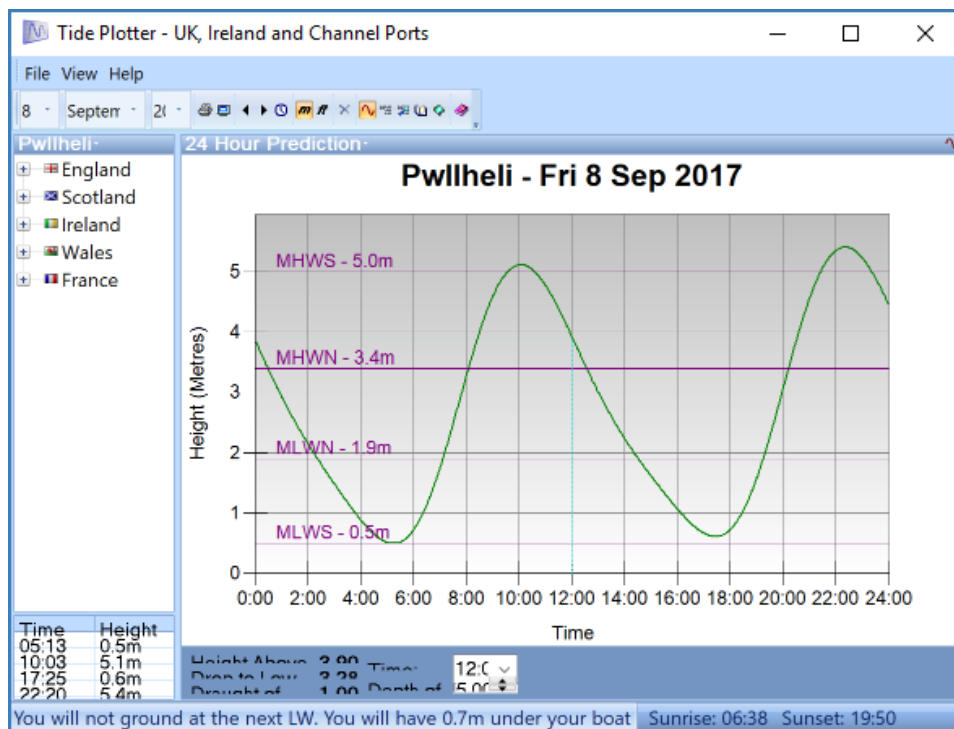
Text ISORA +353 87 2545037. For safety it is recommended to also inform the coastguard by VHF.

"End of Season" APRES RACE.

It is proposed to meet in the NYC immediately after the race to discuss the race and to get the results.

Arriving in Pwllheli on Friday?

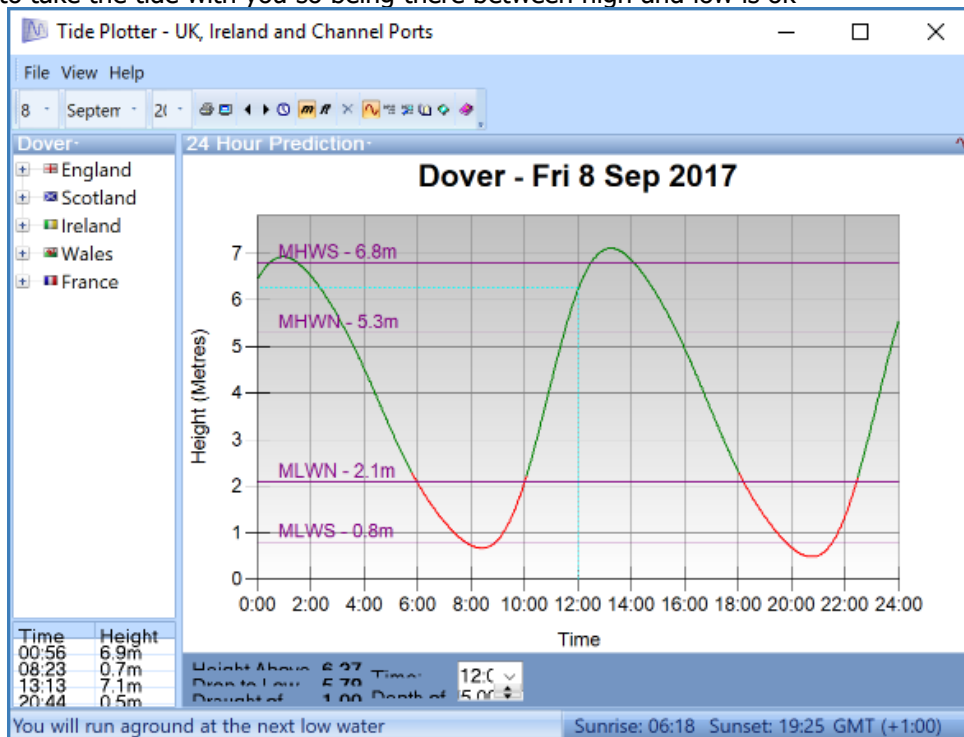
The tide graph for Friday shows that a boat drawing 2.1m needs to be in before 1400hrs and 2.3m before 13.30hrs or then it is after 19.30hrs



With regards to Bardsey Slack water is the same as Dover High or Low

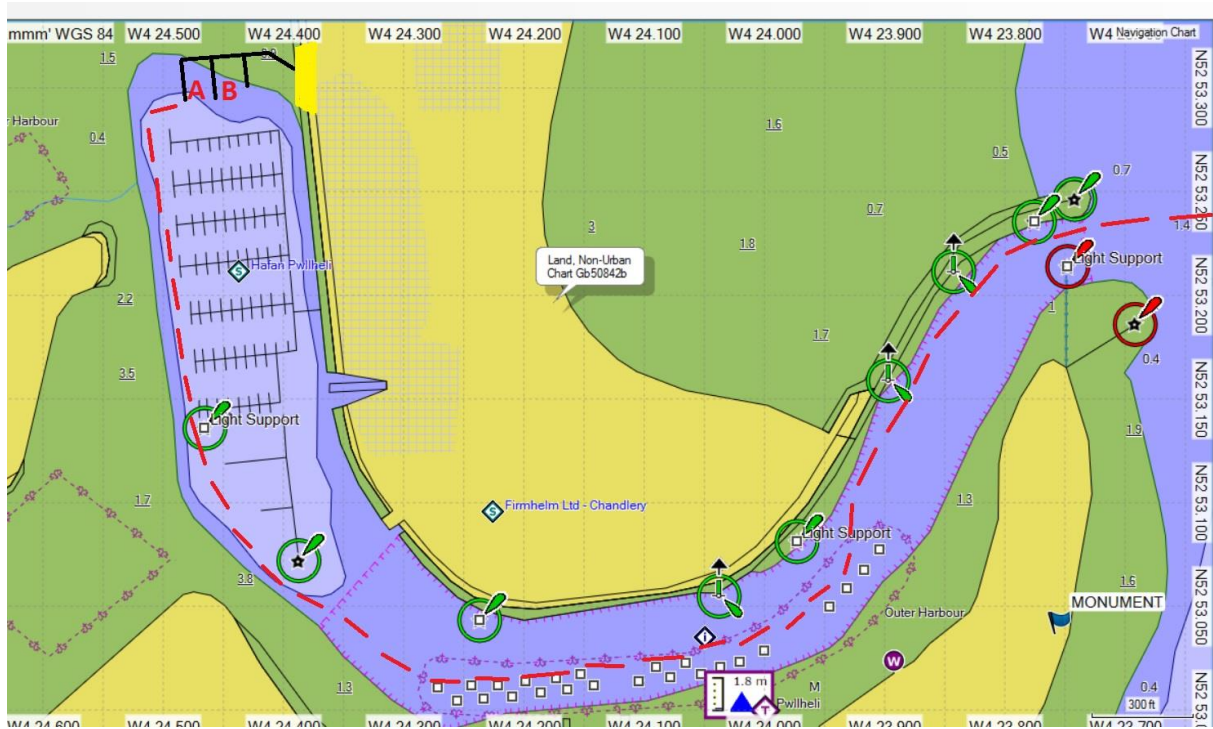
- High 1313hrs
- Low 2044

It is best to take the tide with you so being there between high and low is ok



Looking at the information I would aim to be at Bardsey by about 1700hrs then 3 hrs to Pwllheli will get you in the harbour before it gets dark and with a rising tide.

On arriving proceed up the channel in accordance with the chartlet below and make your way to the Academy Event Centre Pontoons to the north of the Marina Telephone Richard on +44 7540146284 for assistance.



ISORA – Irish Sea Offshore Racing Association

