



ISORA Viking Marine Coastal Series 2017
Supplementary Information
Race 5 – Lambay Dublin Port Day Race
Howth – Dublin Port
Saturday 3rd June 2017

Organised by the National Yacht Club www.nyc.ie.

This Supplementary Information MUST be read in conjunction with the ISORA Avery Crest OFFSHORE SERIES 2017 NOTICE OF RACE & GENERAL CONDITIONS. For details see ISORA website – www.isora.org

This ISORA race will be run with the Royal Alfred 2017 Coastal Series race using the same start, course and finish. The original four ISORA/Royal Alfred races as advised in the ISORA schedule will count towards the Royal Alfred series.

All ISORA entrants in these four races will be automatically entered into the Royal Alfred Coastal Series. Results will be calculated on the best three positions from the four races ie. one discard allowed.

The race is being run in conjunction with Howth Yacht Club and their Lambay Race. All ISORA entrants are requested to support HYC and enter their event online at www.hyc.ie To distinguish the ISORA Class in their event the word "ISORA" should be put in front of the boat name.

SAFETY CATEGORY

The requirements of **Category 4** of World Sailing Offshore Special Regulations 2016-2017 are appropriate for this race. Details of these are on the ISORA website.

THE DECISION WITH REGARD TO STARTING AND CONTINUING A RACE LIES DEFINITELY WITH THE SKIPPER OF EACH BOAT AS HE / SHE ALONE IS AT ALL TIMES RESPONSIBLE FOR THE SAFETY OF HIS / HER OWN BOAT AND CREW

TIME OF START FOR ALL CLASSES

- 11.25 Warning signal - Class flags (Numerals 1 & 2) hoisted
- 11.26 Preparatory Signal - Blue Peter hoisted
- 11.29 Blue Peter down
- 11.30 Start – Class flags down



AVERYcrest
SKI CHALETs MERIBEL



The start may be broadcast on **VHF Channel 77**

STARTING LINE

The start line shall be located just north of Ireland's Eye at the HYC Viceroy mark 'V' and an adjacent committee boat flying a HYC burgee. It may not be anchored and may be using engine power to hold station. This changes RRS 62.1(a).

The committee boat will maintain the line for 10 minutes after the start. After that time, if any boats have not crossed the start line, Viceroy mark 'V' will become a mark on the course and boats must leave that mark to Port.

See HYC Lambay Sailing Instructions for mark locations.

THE COURSE

Weather permitting the course will be no longer than 25 miles long and will be chosen so that the last boat may complete the course by 17.00. The course is as follows:

1. Start at HYC Racing mark "V" Viceroy 53° 25.12N 06°06.07W – Orange Conical
2. Taylors Buoy (S) 53°N 30.13W 06°N 01.52W – Cardinal Mark
3. Lambay Island (S)
4. HYC Mark "P" (P) 53° 25.63N 06° 05.80W – Black Conical
5. HYC Mark "K" (S) 53° 24.60N 06° 03.11W – Black Conical – Lambay finish is a line from "K" extending East
6. North Burford (S) – Cardinal Buoy
7. Finish at Poolbeg Light as pre instructions.

The Course may be confirmed to all entrants by text and afloat to the competitors on VHF CH 77 before the start.

FINISH LINE 1 (HYC Lambay Race)

The finish line will be a line extending 0.4 NM east from the HYC Stack mark "K".

To ensure that each boat has crossed this intercept line it is recommended that the boat cross the line as close as possible to the Stack mark "K".

There will be no Finisher present, the finish will be automatically recorded by the YB Tracker that has been programmed with the appropriate finish line coordinates. **All boats must log their crossing times.**

Boats will then proceed to the next mark on the ISORA course – North Burford (S)

FINISH LINE 2 (ISORA race)

The finish line shall be provided by Poolbeg Yacht and Boat Club (PYBC) approximately the transit between the red Poolbeg Light House & Yellow Inflatable Mark (located approximately 400m in a Se direction from Poolbeg Lighthouse at position 53°20.366'N 006°08,787'W). Finishers must cross in a South to North direction (effectively leaving the yellow finish mark to starboard) from the previous mark as specified in the course announcement. **See photo and chartlets below.**

Please be aware of the shipping channel and finishers should not enter this channel without express agreement with Dublin Port on VHF Channel 12.



Avery Crest YB TRACKER

All boats entered in the race must be fitted with the Avery Crest YB Tracker. The Skipper, accepting the units will be responsible for the replacement cost of the unit in a situation that the unit gets lost or damaged.

The units can be collected from Peter Ryan at Dun Laoghaire Marina on Saturday 3rd June at 09.00 sharp. Boats not based in Dun Laoghaire may collect their units the Committee boat at the start line but only by prior agreement.

The trackers must be returned to Peter Ryan in Poolbeg Yacht Club immediately after the race or dropped into the NYC as soon as possible after.

The tracking can be followed on the YB Tracking app for iPhones and Android. On downloading the app, the "ISORA Avery Crest 2017 Series".

Any queries relating to the Avery Crest Trackers should be dealt with by contacting Peter Ryan +353 87 2545037.

SPONSORS:

Overall ISORA Offshore Series 2016 – Avery Crest
ISORA Coastal Series 2016 – Viking Marine
Race Sponsor – Dublin Port

Please support our Sponsors who support our racing.



PYBC FINISH LINE



ISORA RACE 5

HOWTH LAMBAY RACE & POOLBEG YC DUBLIN PORT
RIVERFEST

SATURDAY 3RD JUNE

FINISH LINE

The finish line shall be provided by Poolbeg Yacht and Boat Club (PYBC) approximately the transit between the red Poolbeg Light House & Yellow Inflatable Mark (located approximately 400m in a SE direction from Poolbeg Lighthouse at position 53°20.366'N 006°08.787'W). Finishers must cross in a South to North direction (effectively leaving the yellow finish mark to starboard) from the previous mark as specified in the course announcement. See photo and chartlets below. Please be aware of the shipping channel and finishers should not enter this channel without express agreement with Dublin Port on VHF Channel 12.

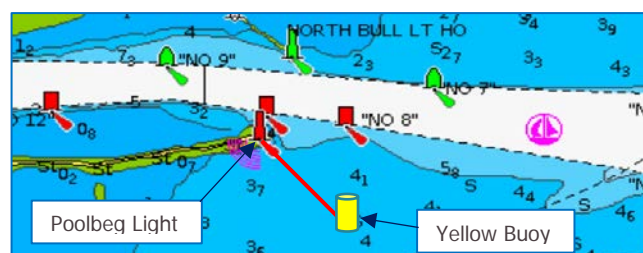
As the YB trackers will be recording the interception time of boats crossing between these coordinates, it is important that all boats treat the coordinate of the buoy as a way point and ensure that they travel some distance past that co-ord. The buoy itself may not be the line. (see chart below).



Poolbeg Light House



Finish Line Location



Finish Line

When approximately 10 minutes from the finish line yachts shall advise of their approach on VHF Ch 37 (M1) call sign 'ISORA Finish'. Please note that the finisher will only have a handheld radio and you may not receive an acknowledgment to the first contact. There will be no sound signal at the finish. The Finisher may radio confirmation of the finish.

The finish time of your yacht and, if known, the name of the yacht ahead and behind shall be recorded. Also the time of rounding each mark should be recorded in the log by each boat. The finish time or, in the case where the yacht has retired, the time of the rounding of the last mark must be sent by text to ISORA at 00353 87 2545037 as soon as possible after the race. At night sail numbers shall be illuminated and radioed to the finisher when crossing the line on VHF Ch 37 (M1) call sign 'ISORA Finish'.

The above procedure is deemed to be a mandatory "Declaration" that the yacht has completed the course in accordance with the sailing instructions and has complied fully with the Safety requirements.

While there is no time limit for the ISORA race, the finisher may not be in attendance at the finish line for later finishers.

BERTHING AT PYBC

All ISORA participants are Welcome to a free overnight berth at Poolbeg Yacht and Boat Club's (PYBC) marina. Please radio Marina on ch 37 or call Marina office on 01 668 9983 on approach.

There is an option for any ISORA finisher to berth above the East link bridge and take part in the parade of sail on the River Liffey, it's a great opportunity to fly your battle flags and show off the ISORA fleet to tens of thousands of Dublin's environs! Details of Dublin Port's Riverfest can be found at www.dublinportriverfest.com. There are numerous bridge lifts arranged as part of Poolbeg's Regatta, please see attached PYBC' NOR which contains details on the bridge lifts (this is provided for information only).

For approach to Dublin Port, please see the attached Notice to Mariners and Dublin Port Guide.

APRES SAIL

ISORA finishers are welcome to Dublin Port's Riverfest and the Caribbean beach party at PYBC's annual regatta! When the race is over, finishers are encouraged to take a trip up the river Liffey to Poolbeg Yacht and Boat Club where there will be an Urban Beach, live Caribbean Bands and much more! Finishers will be greeted with a free drink and food on arrival.

PYBC will be broadcasting the live ISORA race on a screen throughout the day, families and friends are welcome to join in the Riverfest and regatta activities. There are water taxis, fun for the family and parties throughout the weekend. The party will be going on until Monday! There will be an ISORA prize giving at 8pm on Saturday evening.

Notes:

1. The PYBC NOR is provided for information only and is not part of the ISORA Sailing instructions
2. Separate entry to the PYBC regatta is not required for ISORA finishers, just wear a flowery shirt to the beach party!
3. Fun Prizes, in addition to the ISORA prize giving, will be awarded to ISORA champions of Race 5 on Saturday evening.

2-3 JUNE
2017
H.Y.C.



LAMBAY RACES & HOWTH REGATTA

IN ASSOCIATION WITH
MICHAEL J WRIGHT HOSPITALITY

SAILING INSTRUCTIONS





LAMBAY RACES WEEKEND

2017

Organised by Howth Yacht Club Ltd.

Fri 2nd and Sat 3rd June
& Family Fun Day on Sun 4th June



Special Notices

1. If, due to unsuitable weather, it is not possible to run the Lambay Races on Saturday 3 June, it is the intention of the Race Committee to run the Races on Sunday 4 June 2017. The times of the Warning Signal for Saturday 3 June and all other Sailing Instructions shall be applicable.
2. In the event of adverse weather conditions, the Offshore committee boat will have the use of some courses applicable to the Inshore Fleet, which do not round Lambay, and these may be used if required.

1. Rules

The races shall be governed by the Racing Rules of Sailing (RRS), ISA Prescriptions, the Notice of Race, these Sailing Instructions and any amendments thereto. Competitors in races for One Design classes shall comply with their relevant Class Rules. Competitors in IRC and ECHO handicap classes shall comply with the rules of those handicapping systems. In the event of a conflict the Sailing Instructions shall prevail.

2. Notices to Competitors

Notices to competitors will be posted on the Official Notice Board located in the archway beside the Marina Office.

3. Change of Sailing Instruction

Changes to Sailing Instructions will be posted not later than two hours before the scheduled start of the first race so affected. Flag L displayed on the flagpole at the top of the marina bridge denotes that a change of Sailing Instructions has been made.

4. Signals Made Ashore

Signals made ashore will be displayed on the flagpole at the top of the marina bridge. When flag AP is displayed ashore "one minute" is replaced with "not less than 45 minutes" in Race Signal AP. This changes RRS "Race Signals". Boats are requested not to leave the harbour until flag AP is lowered.

5. Schedule of Races

5.1 OFFSHORE Schedule of Races and Class Flags.

Race Officer David Lovegrove

High Water (Howth) 19.22

Ht:3.34m

FRIDAY 2 JUNE

OFFSHORE Committee Boat Starts – Channel 77

<u>Class</u>	<u>Flag</u>	<u>Start</u>
Class 1	No. 1	The warning signal for the 1 st start will be at 1825
Class 2	No. 2	Subsequent starts will be at 5 minute intervals
White Sail Cruiser A	No. 4	
White sail Cruiser B	No. 5	
Shipman	W	

OFFSHORE Starting Area

The starting area will be North of Ireland's Eye.

OFFSHORE Starting Line

The starting line shall be between an orange mark (to be passed to port) and a red/white pole (or mainmast) on the Committee Boat which will display a yellow flag.

OFFSHORE Course Designation

The course will be selected by the Race Officer and relayed to competitors via VHF (channel 77) and will be displayed on the Committee Boat.

OFFSHORE Finish Line

The offshore Finish Line will be the HYC Club Finish Line, (between the Red Vertical Line on the East Pier Starter's Hut and Mark FA).

SATURDAY 3 JUNE

OFFSHORE Committee Boat Starts – Channel 77

H.W. 07.35 3.51M
L.W. 13.52 1.04M

Class	Flag	Start
Class 1	No. 1	The warning signal for the 1 st start will be at 1155.
Class 2	No. 2	Subsequent starts will be at 5 minute intervals
White Sail Cruiser A	No. 4	
White sail Cruiser B	No. 5	
Shipman	W	

OFFSHORE Starting Area

The starting area will be North of Ireland's Eye.

OFFSHORE Starting Line

The starting line shall be between an orange mark (to be passed to port) and a red/white pole (or mainmast) on the Committee Boat which will display a yellow flag.

OFFSHORE Course Designation

Courses shall be designated by numerals displayed on boards on the Committee Boat. The course applicable to each race will be displayed for not less than 4 minutes before its start. This changes RRS 27.1.

Marks are described by letter(s) and the subscript p or s thereafter directs that they be left to port or starboard respectively. **A windward mark, Z (black inflatable) will be laid approximately to windward of the starting line.** This is the first mark on all courses. A white flag displayed on the Committee Boat indicates that either the windward mark has not been laid or that boats shall ignore it and proceed directly to the next mark on the course.

OFFSHORE Courses - Committee Boat Starts (Mark descriptions/positions are on page 6)

- | | |
|---------------------------------------|--|
| 1: Zs Ls Gs Qs Js FAs | 2: Zs Ls Gs Ap Qs Js FAs |
| 3: Zs Ls Os Np Gs Qs Js FAs | 4: Zs Ls Ks Ap Os Np Gs Qs Js FAs |
| 5: Zs Lp Gs Qs Js FAs | 6: Zs Lp Hp As Gs Qs Js FAs |
| 7: Zs Lp Hp Ns Gs Qs Js FAs | 8: Zs Lp Kp Tp Gs Qs Js FAs |
| 9: Zp Lp Gs Qs Js FAs | 10: Zp Lp Ip Es Gs Qs Js FAs |
| 11: Zp Tp Ns Lp Es Ip Es Gs Qs Js FAs | 12: Zp Tp Ms Lp Es Ip Es Gs Qs Js FAs |
| 13: Zp Ls Gs Qs Js FAs | 14: Zp Ls Hp Es Gs Qs Js FAs |
| 15: Zp Ls Mp Ts Gs Qs Js FAs | 16: Zp Ls Mp Ts Up Es Gs Qs Js FAs |
| 17: Zp Ls Gs Qs Js FAs | 18: Zp Ls Np Ts Gs Qs Js FAs |
| 19: Zp Ls Np Ts Mp Es Gs Qs Js FAs | 20: Zp Ls Mp Es Mp Es Gs Qs Js FAs |
| 21: Zp Lp Gs Qs Js FAs | 22: Zp Lp Ts Ap Es Gs Qs Js FAs |
| 23: Zp Lp Ap Es Os Ms Gs Qs Js FAs | 24: Zp As Ep Lp Ap Es Os Ms Gs Qs Js FAs |
| 25: Zp Lp Gs Qs Js FAs | 26: Zp Lp Es Ap Gs Qs Js FAs |
| 27: Zp Lp Es Np Gs Qs Js FAs | 28: Zp Lp Es Np Os Ap Gs Qs Js FAs |
| 29: Zp Op Lp Ts Gs Qs Js FAs | 30: Zp Op Lp Ap Ts Gs Qs Js FAs |
| 31: Zp Op Lp Up Tp Gs Qs Js FAs | 32: Zp Op Np Up Lp Ap Ts Gs Qs Js FAs |
| 33: Zp Op Ls Hp Gs Qs Js FAs | 34: Zp Op Ls Up Gs Qs Js FAs |
| 35: Zp Op Ls Np Ts Hp Gs Qs Js FAs | 36: Zp Gp Ls Mp Ts Hp Gs Qs Js FAs |
| 37: Zp Hp Ls Es Hp Gs Qs Js FAs | 38: Zp Hp Ls Ts Mp Gs Qs Js FAs |
| 39: Zp Hp Ls Ts Mp Es Hp Gs Qs Js FAs | 40: Zp Hp Ls Ts Mp Es Pp Gs Qs Js FAs |
| 41: Zp Hp Lp Ts Gs Qs Js FAs | 42: Zp Hp Lp Ts Np Gs Qs Js FAs |
| 43: Zp Hp Lp Es Mp Gs Qs Js FAs | 44: Zp Hp Lp Ts Np Es Mp Gs Qs Js FAs |
| 45: Zp Hp Lp Es Ap Gs Qs Js FAs | 46: Zp Hp Lp Ks Hp Gs Qs Js FAs |
| 47: Zp Hp Lp Os Mp Gs Qs Js FAs | 48: Zp Hp Lp Es Ap Os Mp Gs Qs Js FAs |

Please Note S.I. 25 – Navigation Marks and Obstructions

OFFSHORE Finishing Line

The finish line shall be between a red/white pole [or mainmast] on the Committee Boat [on station at Mark FA] displaying a blue flag and the red vertical line on the East Pier Starter's Hut.

2



5.2 INSHORE Schedule of Races and Class Flags.

Race Officer: Harry Gallagher.

FRIDAY 2 JUNE

H.W. 19.22 Ht.3.34M

INSHORE Committee Boat Starts – Channel 69

Class	Flag	Start
Class 3	No 3	
Squib	K	The warning signal for the 1 st start will be at 1825
Puppeteer 22	A	Subsequent starts will be at 5 minute intervals
Ruffian 23	U	
HYC 17's	C	

INSHORE Starting Area

The starting area will be in Howth Sound

INSHORE Starting Line

The Starting Line will be the HYC Starting Line

INSHORE Course Designation

The course will be selected by the Race Officer and relayed to competitors via VHF (channel 69) and will be displayed on the Starter's Hut.

INSHORE Finishing Line

The Inshore Finish Line will be the HYC Club Finish Line, (between the Red Vertical Line on the East Pier Starter's Hut and Mark FA).

SATURDAY 3 JUNE

INSHORE Committee Boat Starts – Channel 69

H.W. 07.35 Ht. 3.51M

L.W. 13.52 Ht. 1.04M

Class	Flag	Start
Class 3	No. 3	
Squib	K	The warning signal for the 1 st start will be at 1125
Puppeteer 22	A	Subsequent starts will be at 5 minute intervals
Ruffian 23	U	

INSHORE Starting Area

The starting area will be North West of Ireland's Eye.

INSHORE Starting Line

The Starting Line shall be between an orange mark (to be passed to port) and a red/white pole or mainmast of the Committee Boat, which will display an orange flag.

INSHORE Course Designation

Courses shall be designated by numerals displayed on boards on the Committee Boat. The course applicable to each race will be displayed for not less than 4 minutes before its start. This changes RRS 27.1.

Marks are described by letter(s) and the subscript p or s thereafter directs that they be rounded to port or starboard respectively, except those marks in a ☐ (box) which are passing marks. **A windward mark, Z (yellow inflatable) will be laid approximately to windward of the starting line.** This is the first mark on all courses. A white flag displayed on the Committee Boat indicates that either the windward mark has not been laid or that boats shall ignore it and proceed directly to the next mark on the course.



INSHORE Courses - Committee Boat Starts (Mark descriptions/positions are on page 6)

- | | |
|--|--|
| 51: Zs Ms Ls Hp SsFB | 52: Zs Ms Ls Is Hp SsFB |
| 53: Zs Mp Cp Ip Up Ss FB | 54: Zs Mp Ws Ps Up Mp Ss FB |
| 55: Zp Ps Lp Is SsFB | 56: Zp Ps Lp Hp As Is SsFB |
| 57: Zp Ws Up Ws Up Pp Cp Vs Is SsFB | 58: Zp Ws Up Ws Up Pp Is FB |
| 59: Zp Ep Lp Wp Ss FB | 60: Zp Ep Lp Wp Hs SsFB |
| 61: Zp Ps Ap Wp Hs SsFB | 62: Zp Ep Ps Ap Wp Hs Cp Ss FB |
| 63: Zp Ps Ls Is SsFB | 64: Zp Ps Ls Wp Is SsFB |
| 65: Zp Vp Cp Dp Vp Wp Op Cp Dp SsFB | 66: Zp Vp Cp Dp Vp Wp Op Vp Cp Dp Vp Cp Dp SsFB |
| 67: Zp Kp Ls Is SsFB | 68: Zp Kp Ls Wp Is SsFB |
| 69: Zp Vp Wp Dp Wp Dp Cp Ss FB | 70: Zp Vp Wp Dp Wp Dp Wp Ip Cp Ss FB |
| 71: Zp Lp Hp Is SsFB | 72: Zp Lp Pp Is SsFB |
| 73: Zp Us Dp Hp Pp Is SsFB | 74: Zp Hp Pp Is Wp Cp Vp Pp Is SsFB |
| 75: Zp Ip Lp Is SsFB | 76: Zp Ip Lp Es Up Is SsFB |
| 77: Zp Ip Pp Cp Vp Pp Cp Is SsFB | 78: Zp Ip Pp Cp Pp Hs Is SsFB |
| 79: Zp Ip Lp Ip SsFB | 80: Zp Kp Lp Ip SsFB |
| 81: Zp Op Np Cp Vp Cp Ss FB | 82: Zp Op Np Cp Ss FB |
| 83: Zs Ps Ls Ts Vp Is SsFB | 84: Zs Ps Ls Pp Is SsFB |
| 85: Zp Ps As Es Op Es Is SsFB | 86: Zs Ps As Pp As Pp Is SsFB |
| 87: Zs Ps Ls Es Hp Is SsFB | 88: Zs Ps Ls Es Pp Is SsFB |
| 89: Zp Cp Op Wp Op Wp Cp Dp SsFB | 90: Zp Cp Op Wp Op Wp Cp Dp Cp Dp Ss FB |
| 91: Zs Ps Lp Ip SsFB | 92: Zs Ps Lp Os Pp Ss FB |
| 93: Zp Cp Dp Wp Ip Op Pp Wp Dp Wp Ss FB | 94: Zp Cp Op Pp Wp Dp Wp Ss FB |
| 95: Zs Ps Lp Ap Ip SsFB | 96: Zs Ps Lp Es Ap Ip SsFB |
| 97: Zp Wp Ip Pp Dp Pp Wp Dp Vp SsFB | 98: Zp Wp Ip Pp Ip Pp Ss FB |

Please Note S.I. 25 – Navigation Marks and Obstructions

INSHORE Finishing Line

The finishing line is located in the vicinity of the Spit Mark (S) and the South Rowan Buoy (R) and shall be between a black inflatable mark (FB) and the mainmast (or red/white pole) on the adjacent Committee Boat displaying a blue flag.

6. Re-crossing Start/Finish Lines

All boats shall keep clear of the starting lines until their warning signal. Boats shall not re-cross a finishing line, except to finish having completed a penalty. Boats, having started and cleared their starting line, shall not re-cross that line while starts are in progress. Boats shall not cross any other starting line while starts are in progress. The Protest Committee may penalise a boat failing to comply with this sailing instruction with a score of its discretion, including DSQ.

7. Starting Time Limit

A boat starting later than ten minutes after her starting signal will be scored DNS. This changes RRS Appendix A4.1.

8. Finishing Time Limit

Friday 2 June

The Time Limit for all races is 2100. If a boat in a class finishes within this limit, the time limit for that class shall be extended to 2115.

Saturday 3 June

The Time Limit for all races is 1700. If a boat in a class finishes within this limit, the time limit for that class shall be extended to 1730. In the event of postponement(s) and/or general recall(s) the time limit(s) for races so affected shall be correspondingly extended. A boat which fails to finish within the time limit will be scored DNF. This changes RRS 35 and Appendix A4.1



9. **Shortening Course**

Friday 2 June

RRS 32 shall apply to all races

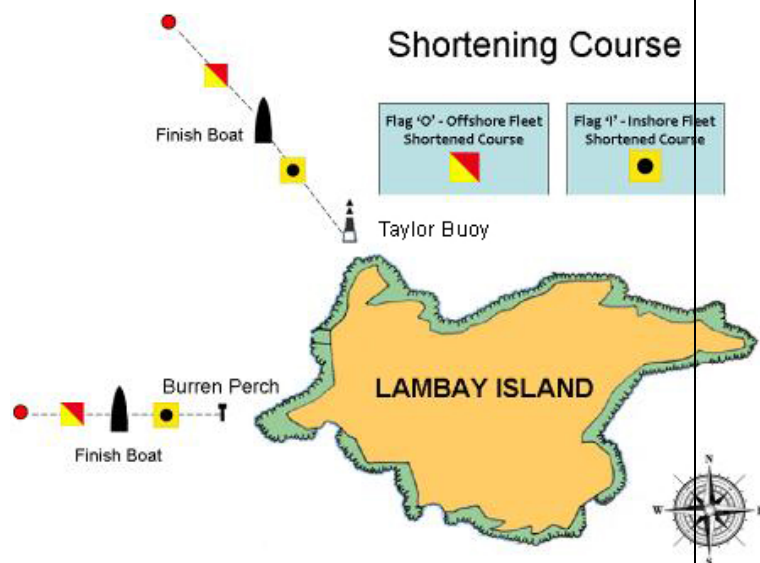
Saturday 3 June

RRS 32 is changed in that the Race Committee may, at their discretion, shorten the course at any mark. They may also shorten the course at the Taylor Buoy or the Burren Perch at Lambay Island.

Should this be necessary, a Committee Boat/ Finish Boat will take station north of the Taylor Buoy or west of the Burren Perch and display flag "S" superior to a flag indicating the fleet or fleets to be shortened – flag "I" for the Inshore Fleet and flag "O" for the Offshore Fleet. The class flag for the relevant class(es) to be shortened, will also be displayed.

Boats of the Inshore Fleet shall finish by passing between the Taylor Buoy or Burren Perch and the Committee Boat - boats of the Offshore Fleet shall pass between the committee boat and the Orange Buoy finish mark.

Instructions may also be given over the radio on both channels 77 and 69.



10. **Protests**

Protests and Requests for Redress shall be delivered to the Race Office within the Protest Time Limit. Protest forms are available from the Race Office.

The Protest Time Limit is 90 minutes from the time of finish of the last boat in the Offshore or Inshore fleets as appropriate. This time limit shall be extended to two hours in the event of the race being finished at either the Taylor Buoy or the Burren Perch at Lambay Island. These times will be posted on the Official Notice Board.

The time and place of Protest Hearings will be posted on the Official Notice Board within 15 minutes of the protest time limit. The listing of a boat on this schedule shall constitute informing her of a hearing under RRS 63.2. Parties involved shall present themselves and their witnesses at the time and place indicated on the schedule.

A request to reopen a hearing shall be delivered to the Protest Committee not later than 30 minutes after the party was informed of the decision. This changes RRS 66.

11. **Navigation Marks and Obstructions**

The Navigation Marks in and around Howth Sound shall be left as follows –

- South Rowan Buoy: to be passed to the West and South
- Rowan Rocks Buoy: to be passed to the East and South
- HYC Spit Mark: to be passed to the East

Any part of Ireland's Eye or Lambay capable of being touched while racing is designated as an obstruction to sea room.

When rounding Lambay, boats shall pass outside the Taylor Buoy and Burren Perch and are advised to give both a wide berth.

Competitors are reminded of a trawler wreck in Howth Sound, south of the Carrageen Rocks on Ireland's Eye, which is submerged at most stages of the tide.

5



12. Radio Communications

Competitors are advised to keep a listening watch on VHF Channel 77 for Offshore Committee Boat and Channel 69 for Inshore Committee Boat where information relevant to racing may be broadcast. Should this information be broadcast, it shall not constitute outside assistance and shall not be the subject of any protest. Failure to broadcast this information shall not be the basis for any claim for redress. The Squib class rules are changed by this Sailing Instruction to allow use of VHF radio.

Competitors who retire from a race shall inform the Race Committee promptly by radio on Channel 77 or 69 as appropriate. Competitors without radio should inform the Race Office or Marina Office on coming ashore.

13. Prize Giving

The prize giving for the Friday evening races will be held as soon as possible after racing. The approximate time of the prize-giving for the Lambay races will be 1730hrs on Saturday 3 June.

14. Safety

Competitors participate entirely at their own risk; see Fundamental Rule 4, Decision to Race and the ISA Safety Booklet. Open boat entrants are referred to relevant class regulations. The wearing of suitable personal flotation devices in all boats is strongly recommended at all times.

The responsibility for the safety of competing boats and their crews lies solely with the said competitors. Howth Yacht Club Ltd. and/or the Organising Committee will not accept any liability for material damage, personal injury or death sustained in conjunction with, prior to, during, or after racing.

Boats shall keep clear of Race Committee vessels [committee boat, mark laying boats, patrol boats] from the time the Committee Boat is on station prior to starting racing.

15. Insurance

Each participating boat shall be insured with adequate, valid, third party liability insurance.

EMERGENCY PROCEDURES AFLOAT

If an incident occurs during the regatta, the following procedure should be followed:

Go to VHF Channel 16 and broadcast the following (three times):

- 1) MAYDAY if the boat is in distress
- 2) PAN PAN if the boat requires outside assistance
- 3) PAN PAN MEDICO if medical assistance is required

In every case state:

1. The nature of the incident/ injury
2. The name and position of the boat

Other issues can be reported to the respective Committee Boat, through your course VHF Channel 69 or 77 and advise the Race Officer of the problem.



Mark Descriptions/Positions

<u>ID</u>	<u>Description</u>	<u>Shape</u>	<u>Colour</u>	<u>Lat. (N)</u>	<u>Long. (W)</u>
A	Apex	Conical	Black	53 26.76	06 03.26
C	Cush	Conical	Black	53 24.61	06 05.45
D	Dunbo	Conical	Yellow	53 24.73	06 03.85
E	East	Conical	Black	53 26.00	06 02.20
FA	East Pier Finish	Cylindrical	Yellow	53 23.70	06 03.78
FB	Howth Sound Finish	Inflatable	Black	53 24.20	06 04.29
G	Garbh	Conical	Black	53 25.00	06 02.32
H	Hub	Conical	Black	53.25.71	06 04.43
I	Island	Conical	Black	53 24.70	06 04.36
J	Thulla	Conical	Black	53 23.80	06 03.40
K	Stack	Conical	Black	53 24.60	06 03.11
L	Lambay Island				
M	Malahide	Conical	Black	53 27.23	06 05.59
N	North	Inflatable	Black	53 27.99	06 03.40
O	Osprey	Conical	Orange	53 25.41	06 03.52
P	Portmarnock	Conical	Black	53 25.63	06 05.80
Q	Rowan Rocks	IALA	BYB	53 23.88	06 03.22
R	South Rowan	IALA	Green	53 23.78	06 03.88
S	Spit	Conical	Black	53 24.42	06 04.51
T	Talbot	Conical	Black	53 27.31	06 01.30
U	Ulysses	Conical	Orange	53 26.22	06 04.97
V	Viceroy	Conical	Orange	53 25.12	06 04.78
W	West	Conical	Black	53 24.96	06 06.07
Y	Ireland's Eye				
Z	Windward (Offshore Starts)	Inflatable	Black		
Z	Windward (Inshore Starts)	Inflatable	Yellow		

Shortened Course Finish

Taylor Buoy
Burren Perch

Small Orange Buoy

North Cardinal
West Cardinal

53 30.13
53 29.21

06 01 52
06 02 28

*Every effort is made to ensure this data is accurate and should be used as an indication of the location of marks
Courses designed with the aid of Soft Touch Programmes*

GENERAL

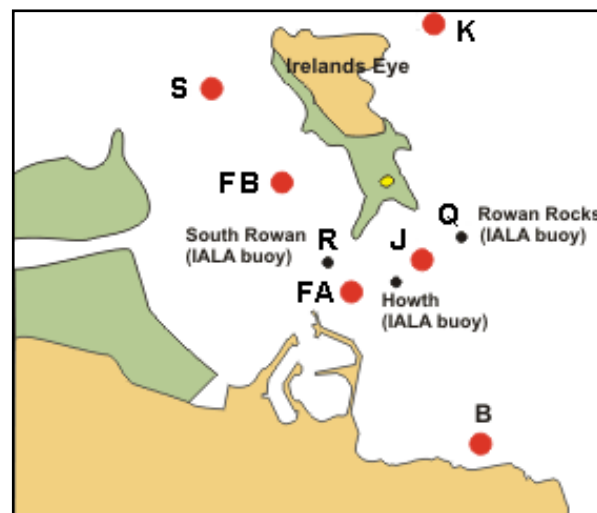
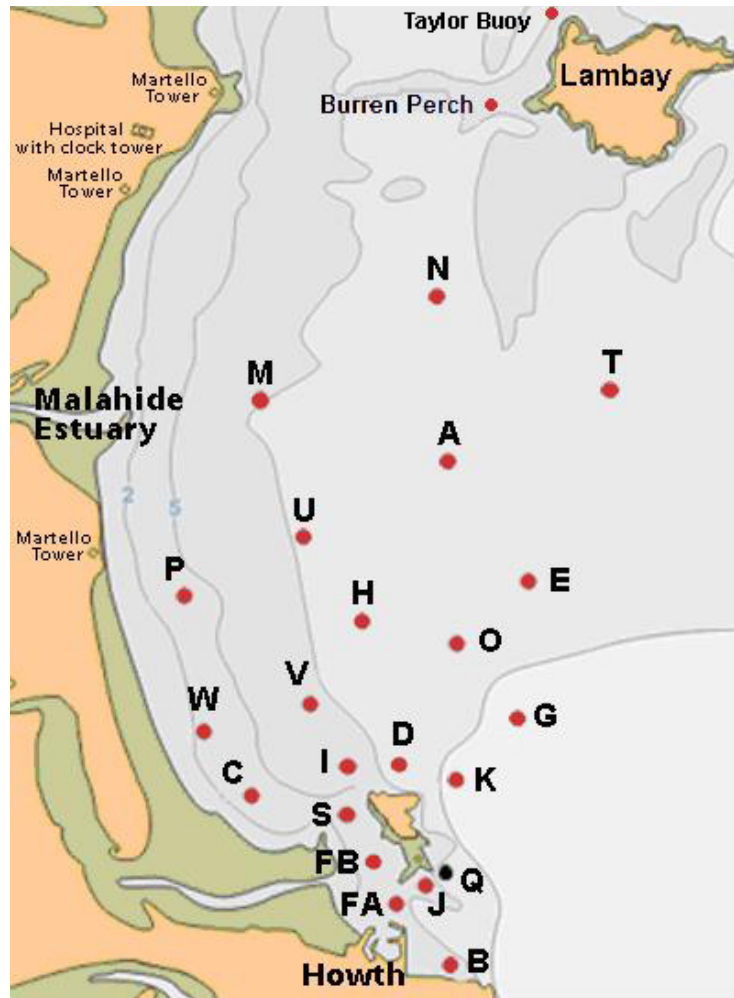
When entering/leaving Howth Harbour, stay on the right hand side of the fairway and harbour entrance i.e. always pass port to port. Also, Howth Sound is a restricted channel and accordingly boats shall not impede trawlers.

The attention of all participants is drawn to the car parking regulations in the vicinity of the Club. The Harbour Authority rigidly enforces these. Traffic restrictions will in place in Howth on 4th June. It is recommended that competitors use public transport, particularly the DART, where possible.

Competitors are granted temporary membership of Howth Yacht Club for the day of the Lambay Races; subject only to the provisions of the Club rules for withdrawing or withholding said membership.



Course Maps



8



Race Marks - 2017 Relative Bearings Table - Magnetic (Approx.)

	A	B	C	D	E	G	H	I	J	K	M	N	O	P	Q	S	T	U	V	W
A		186°	211°	196°	146°	168°	220°	207°	188°	184°	295°	002°	192°	234°	185°	203°	071°	248°	215°	229°
B	006°		315°	352°	019°	024°	350°	336°	357°	010°	347°	005°	002°	327°	010°	331°	022°	347°	340°	321°
C	031°	135°		084°	054°	079°	029°	086°	124°	092°	358°	020°	056°	348°	119°	115°	043°	010°	038°	312°
D	016°	172°	264°		043°	078°	347°	272°	170°	110°	344°	011°	023°	309°	161°	233°	036°	342°	312°	287°
E	326°	199°	234°	223°		190°	264°	233°	204°	207°	307°	346°	238°	261°	202°	225°	028°	284°	246°	252°
G	348°	204°	259°	258°	010°		305°	263°	214°	236°	325°	354°	306°	287°	211°	249°	021°	314°	281°	275°
H	040°	170°	209°	167°	084°	125°		191°	168°	151°	342°	021°	125°	267°	164°	187°	055°	334°	205°	238°
I	027°	156°	266°	092°	053°	083°	011°		148°	101°	353°	018°	048°	318°	140°	177°	043°	357°	350°	293°
J	008°	177°	304°	350°	024°	034°	348°	328°		018°	345°	006°	004°	323°	062°	317°	026°	345°	334°	312°
K	004°	190°	272°	290°	027°	056°	331°	281°	198°		337°	003°	350°	304°	190°	259°	028°	332°	304°	288°
M	115°	167°	178°	164°	127°	145°	162°	173°	165°	157°		066°	152°	184°	163°	173°	094°	166°	173°	193°
N	182°	185°	200°	191°	166°	174°	201°	198°	186°	183°	246°		187°	211°	184°	196°	125°	214°	202°	214°
O	012°	182°	236°	203°	058°	126°	305°	228°	184°	170°	332°	007°		280°	180°	215°	040°	319°	256°	260°
P	054°	147°	168°	129°	081°	107°	087°	138°	143°	124°	004°	031°	100°		139°	149°	058°	042°	132°	192°
Q	005°	190°	299°	341°	022°	031°	344°	320°	242°	010°	343°	004°	360°	319°		308°	024°	342°	329°	308°
S	023°	151°	295°	056°	045°	069°	007°	024°	137°	082°	353°	016°	035°	329°	128°		039°	357°	342°	304°
T	251°	202°	223°	216°	208°	201°	235°	223°	206°	208°	274°	305°	220°	238°	204°	219°		249°	229°	236°
U	068°	167°	190°	162°	104°	134°	154°	177°	165°	152°	346°	034°	139°	222°	162°	177°	069°		180°	213°
V	035°	160°	218°	132°	066°	101°	025°	170°	154°	124°	353°	022°	076°	312°	149°	173°	049°	000°		264°
W	049°	141°	132°	107°	072°	095°	058°	113°	132°	108°	013°	034°	080°	012°	128°	129°	056°	033°	084°	

NOTICE OF RACE

3rd 4th & 5th JUNE

Riverfest And Caribbean Beach Party!!!

Regatta 2017

River Liffey Racing

Saturday 3rd June

- 12:05 Sailing Dinghies depart PYBC
- 12:30 Bridge Lift**
- 12:40 Dinghy Race 1
- 13:50 Bridge Lift**
- 15:45 Ruffians and Eboats depart PYBC marina
- 16:00 Bridge Lift**
- 16:10 Ruffians / Eboats Riverfest Race 1
- 18:00 Bridge Lift**

Sunday 4th June

- 12:05 Sailing Dinghies depart PYBC
- 12:30 Bridge Lift**
- 12:40 Dinghy Race 2
- 13:50 Bridge Lift**
- 15:45 Ruffians and Eboats depart PYBC marina
- 16:00 Bridge Lift**
- 16:10 Ruffians / Eboats Riverfest Race 2
- 18:00 Bridge Lift**

Monday 5th June

- 12:05 Sailing Dinghies depart PYBC
- 12:30 Bridge Lift**
- 12:40 Dinghy Race 3
- 12:40 Ruffians / Eboats Race 3 (In front of club)
- 13:50 Bridge Lift**
- 15:30 Bridge Lift**
- 15:45 Ruffians and Eboats depart PYBC marina
- 16:00 Ruffians / Eboats Riverfest Race 4
- 18:00 Bridge Lift**
- 19:00 Ruffian / Eboats Prize Giving

Dublin Bay Racing

Saturday 3rd June

- 08:00 Registration from 8am
- 10:00 Skippers Briefing
- 10:15 Depart Marina
- 11:00 ISORA Race 5 – HYC – Lambay – PYBC*
- 11:15 Inshore "Around the Cans" Race (Cruiser, White Sail and One Design Classes)
- 12:00 DBOGA Races Inshore "Around the Cans" Race
- 20:00 Inshore & ISORA Prize Giving

Sunday 4th June

- 08:00 Registration from 8am
- 10:00 Skippers Briefing
- 11:00 Depart Marina
- 12:00 Round Muglins Race Cruiser and White Sails Classes
- 20:00 Muglins Race Prize Giving

*Register with HYC and ISORA, Finish provided by PYBC.



Parade of Sail & Entertainment

Friday 2nd June

- 12:00 Tall Ship Parade up the Liffey

All day Old Gaffers arrival

Saturday 3rd June

- 08:00 Breakfast at PYBC
- 12:00 Lunch Available
- 14:00 Start of Caribbean Beach Party
- 13:50 Bridge Lift**
- 16:00 Bridge Lift**
- 17:50 Parade of Sail
- 18:00 Bridge Lift**
- 18:00 BBQ and Platters @ PYBC

Sunday 4th June

- 08:00 Breakfast at PYBC
- 11:00 Skippers Briefing for Parade of Sail
- 12:30 Bridge Lift**
- 12:00 Lunch Available @ PYBC
- 14:00 Caribbean Beach Party Cont.
- 13:50 Bridge Lift**
- 16:00 Bridge Lift**
- 17:50 Parade of Sail
- 18:00 Bridge Lift**
- 18:00 BBQ and Platters @ PYBC

Monday 5th June

- 08:00 Breakfast at PYBC
- 11:00 Skippers Briefing for Parade of Sail
- 12:30 Bridge Lift**
- 12:00 Lunch Available @ PYBC
- 14:00 Caribbean Beach Party Cont.
- 13:50 Bridge Lift**
- 16:00 Bridge Lift**
- 17:50 Parade of Sail
- 18:00 Bridge Lift**
- 18:00 BBQ and Platters @ PYBC

€30 Entry Fee for racing : Access to Caribbean Beach Party

Free Marina & tickets for complimentary drinks in registration pack

Dublin Port Company is proud sponsors of PYBC

Urban Beach Party!!!

Don't forget your beach wear, prize for most outrageous flowery shirt

Notice of Race

Poolbeg Yacht and Boat Club



Dublin Port Company is proud sponsors of PYBC



Regatta 2017

June 3rd 4th and 5th 2017

The Poolbeg Yacht and Boat Club Regatta will be held at Poolbeg Yacht and Boat Club, 3rd 4th and 5th June 2017.

NOTE: These instructions apply mainly to Keelboat classes. Additional Sailing Instruction will be provided for dinghy class boats on registration (see section 10).

1 ORGANISING AUTHORITY

1.1 The Regatta is organised by Poolbeg Yacht and Boat Club All entries and enquiries should be addressed to: Organising Committee Chairman, Poolbeg Yacht and Boat Club, South Bank, Ringsend, Dublin 4. sailing@poolbegmarina.ie

2 RULES AND ELIGIBILITY

2.1 The Regatta will be governed by the ISAF Racing Rules of Sailing 2017 (RRS), the prescriptions of the Irish Sailing Association (ISA), the ISA ECHO Performance Handicap System, the ISAF/ORC Safety Regulations Category 4, this Notice of Race and the Sailing Instructions and any amendments thereto.

2.2 Entries are accepted at the sole discretion of the Organising Committee.

3 DIVISIONS/CLASSES

3.1 Racing will be scored under standard echo and adjusted club echo.

3.2 The applicable adjusted club handicap will be your current club echo but limited to 3% +/- the boats standard Echo handicap, This is extended to 5%+/- for bilge keel boats. This recognises differing sailing abilities but limits the extremities of club handicaps. One design classes will not be rated and will race off scratch.

3.3 Boats in ECHO Classes will be divided as follows on the basis of their standard ECHO

ECHO Class I Ratings of 0.990 and above

ECHO Class II Ratings of 0.915 – 0.989

ECHO Class III Ratings 0.915 and below

ECHO Class IV White Sails Fleet – No Spinnaker

(subject to the Race Committee's right to allocate a boat to any Class).

The Handicap Bands for the Classes are provisional, and may be subject to change by the Race Committee up to 2 hours before Race 1, to provide an even spread of boats in the Classes.

4 SCHEDULE OF RACES

4.1 The schedule of races will be as follows:

Race 1 Saturday June 3rd Warning signal at 12.30pm

Race 2 Sunday June 4th Warning signal 12:15pm

The Organising Authority reserves the right to amend the Schedule of Races.

5 SCORING

5.1 The Low Point scoring system of Appendix A of the RRS will apply. One race is required to be completed to constitute a series. When all races have been completed, a boat's series score will be the total of her 2 race scores.

6 ENTRIES

6.1 Entries shall be made by completing the entry form and returning the form to Poolbeg Yacht and Boat Club. Entries are accepted at the sole discretion of the Organising Authority. Entry Fees: All Classes €30 entry, registration includes Free marina voucher , Complimentary drink voucher for sailing club and access to Caribbean Beach Party .

7 SAIL NUMBERS

7.1 Each boat shall show a distinguishing number on each side of its mainsail, which shall be the same number as declared on the Entry Form.

8 HANDICAPS

8.1 ECHO handicaps and adjusted club handicaps will be published on the official notice board outside the race office not later than 10.00 Hrs. on Sat Aug 13th

9 PRIZES/TROPHIES

9.1 Prizes will be awarded in each Class in Adjusted club handicap and will consist of 1st, 2nd, 3rd and overall prizes and trophies. Prizes will be awarded to 1st and 2nd in all standard Echo classes and One Design Classes

Prizes will be awarded to all clubs holding confirmed feeder races on the Saturday with Feeder race prize giving as per schedule..

10 REGISTRATION AND SAILING INSTRUCTIONS

10.1 All entrants shall register with the Race Office in the Poolbeg Yacht and Boat Club management offices upon arrival. Sailing Instructions , Race card , Vouchers and Visitor Information will be available on registration and may be posted on the website prior to the event. The Pre-Event Race Office hours are: Saturday June 3rd 08.00hrs – 20.00 hrs Sunday June 4th 08.00 hrs - 10.00 hrs It is important to register early to allow clarity of all boats handicaps.

11 RACING AREA

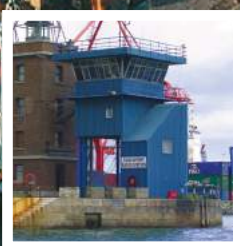
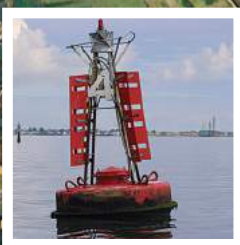
11.1 Races will be sailed in Dublin Bay area. Ruffian and Eboat classes will race their courses in Dubln Bay in the morning and upriver of the Eastlink Bridge after the Dublin Bay race.

12 BERTHING

12.1 Entry includes free overnight berth in Poolbeg marina Saturday 3rd and Sunday 4th June. Early entry is strongly encourage to assist in the management of an expected large fleet. Only boats actually racing on Sunday qualify for the complementary regatta berth and will require a marina voucher available at registration. Please radio Marina on ch 37 or call Marina office on 01 668 9983 on approach.

13 DISCLAIMER OF LIABILITY

13.1 Competitors participate in the Poolbeg Yacht and Boat Club Cruiser Regatta entirely at their own risk. See RRS Rule 4, Decision to Race. Poolbeg Yacht and Boat Club and their officers, servants and agents accept no responsibility in respect of loss of life, personal injury or loss of or damage to property sustained in conjunction with or prior to, during or after the Regatta. It is the sole and exclusive responsibility of each owner or owner's representative to decide whether or not to start or continue to race. Owners shall acknowledge their responsibility on the official Entry Form and draw attention of their crew and associates to this disclaimer. Boat owners and crew shall ensure that they are adequately insured against loss, damage or injury to persons, boats or equipment at all times and however occurring.



For all recreational craft using Dublin Port and Bay, compiled by Dublin Port Company in consultation with local yacht and boat clubs

Dublin Bay Guidance Notes for Leisure Craft



FACTS TO BEAR IN MIND

1. As both the number of large commercial ships and recreational craft using Dublin Port is increasing it is essential that close quarter situations do not arise.
 2. Commercial vessels using Dublin Port or Dun Laoghaire Port normally have a qualified pilot or certified master with proven local knowledge on board. They "listen out" on VHF channel 12 when in Dublin Port's jurisdiction.
 3. Commercial vessels will follow the routes designated in the attached illustration. All recreational craft when obliged to navigate within such areas should do so with extreme caution following the Int. Collisions Regulations.
 4. Large conventional commercial craft travel at a manoeuvring speeds of between 8 to 15 knots whilst within the ports jurisdiction. The lower limit varies from ship to ship and is "as safe navigation permits".
 5. Ships will be traveling faster than you may estimate, even in congested waters.
 6. Ships that are light or partially loaded, particularly in windy conditions, will require a higher minimum speed to remain under full control.
 7. A large ship visible on the horizon may take no more than 10 minutes to reach you under clear conditions, under hazy conditions this time could be much less. At 10 knots a ship will travel a nautical mile in 6 minutes, at 15 knots it takes only 4 minutes to travel one nautical mile.
 8. A large deep draught ship cannot easily avoid small craft in a narrow channel. It is up to leisure craft to keep clear. (See Rule 9 Int. Collision Regs excerpt on page 4.)
 9. A ship slowing down does not steer very well. It requires the action of its propeller to respond. When the propeller is going "astern" the ship's steering will be adversely affected.
 10. As well as large cargo ships, a variety of working craft also use the port, tugs, pilot cutters, dredgers, fast ferries, barges under tow etc. In particular a towing line may be partly submerged and therefore potentially dangerous to other craft passing too close.
- starboard side of the channel or if the water depth allows outside the buoyed channel.
2. Keep a good lookout. Be aware of all ship movements, especially astern of you.
 3. Do not underestimate the speed of ships. Allow plenty of time to take effective evasive action in the vicinity of large ships.
 4. Be visible. At night make sure your navigation lights can be clearly seen. If you see the navigation lights of a vessel approaching and you think that he has not seen you, get out of the way. Also use a torch or search-light to illuminate the sails (if appropriate). Remember (as indicated in the attached illustration), from the bridge of a loaded container ship or large tanker the captain/pilot may lose sight of you a half a nautical mile ahead, although you can see that ship clearly from your vessel at all times.
 5. Keep watch at night. You may have difficulty seeing a large ship approach, even on a clear night. In reduced visibility you may have little warning of its approach. If you see a black shadow against shore lights or as a growing shadow, at that point a close quarter situation is already imminent. Remember you cannot be easily seen at night (particularly in a background of lights) and judging distances at night can prove difficult.
 6. Watch the ships navigation lights. If you see both ships sidelights you are dead ahead, follow the Int. Collision Regs. and any alteration of course should be early, substantial and be visible to the approaching ship. Be aware that ships alter course at the Dublin Bay buoy and No.3/No.4 buoys. Be aware of your position and the position of other vessels around you at all times.
 7. Know the whistle signals (see illustration). Five or more short and rapid blasts on the ships whistle indicates the ship is in doubt about your action or the lack thereof. Check immediately if this signal was meant for you, if so take immediate and appropriate action. Three short blasts means "my engines are going astern" one short blast means "I am altering my course to starboard". Two short blasts "I am altering my course to port".
 8. Keep your VHF tuned to channel 12 the port working frequency, and have the volume high enough to hear above the noise of the engine. Listen for traffic information from Dublin Port V.T.S. Only if you are the controlling vessel in a flotilla of other vessels, and you observe a hazardous situation developing, or in the event of an emergency developing within the ports jurisdiction, you should transmit on VHF channel 12.

WHAT SHOULD YOU DO?

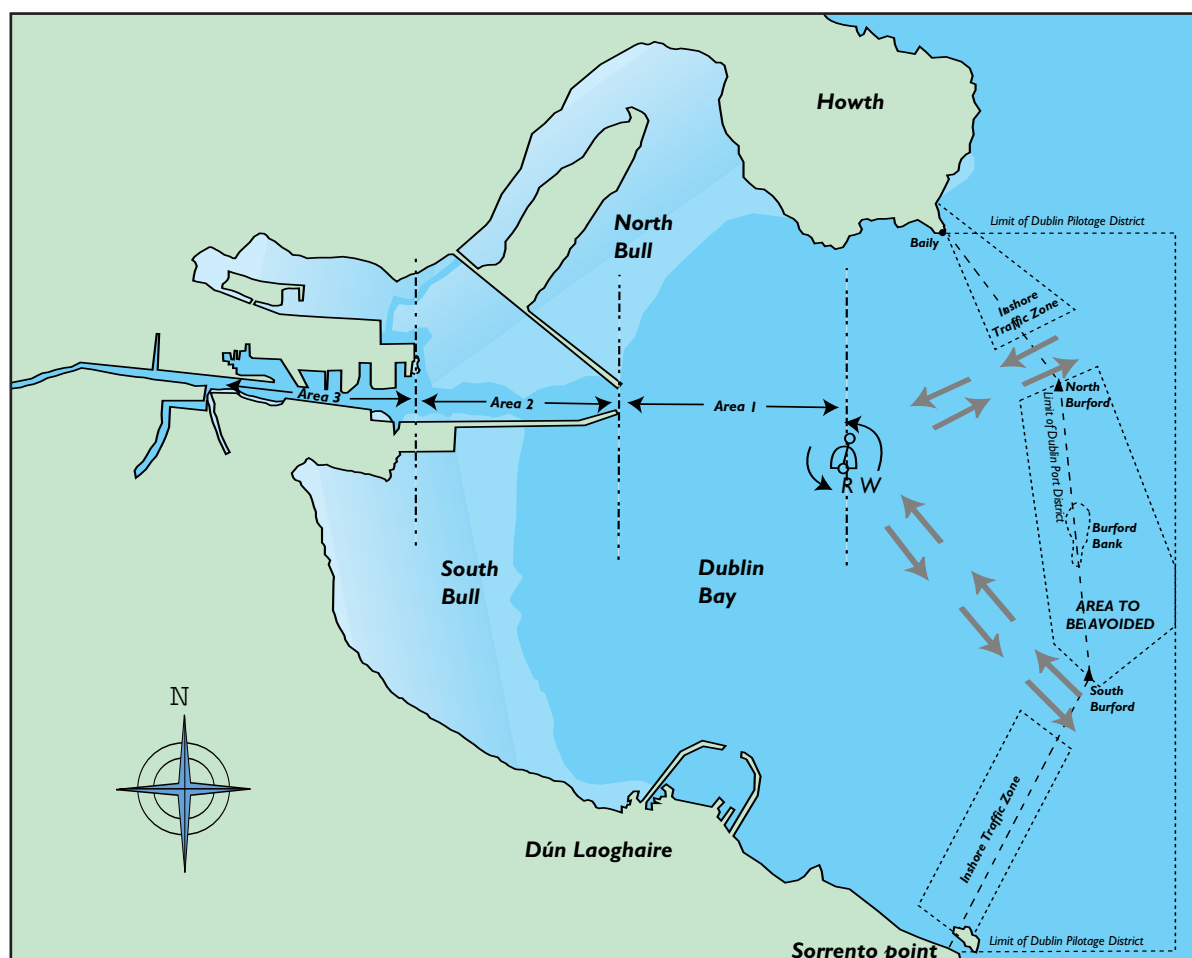
1. Avoid sailing in the buoyed channel area, avoid sailing within 0.5 nautical mile of the Dublin Bay buoy and in the separation schemes, (see illustration). This is especially critical in periods of reduced visibility. When obliged to cross the fairway, cross at right angles to the traffic flow. Also obey rule 9 of the Collision Regulations by either keeping to the

Remember CH 12 is Dublin Port's primary working channel and used to manage port traffic. No private or unnecessary communications to take place on this channel.

DUBLIN PORT COMPANY

Small Craft (Leisure) Regulations

The port area shall be divided into three areas for purposes of small craft.



NOT TO SCALE. NOT TO BE USED FOR NAVIGATION.

Area 1- from Dublin Bay Buoy to Poolbeg Lighthouse

Small craft shall not navigate inside the fairway and should remain outside the line of buoys. If it is necessary to cross the fairway, crossing should be at right angles.

Area 2 - Poolbeg Lighthouse to No. 14 Buoy

Small craft shall comply with the International Regulations for Prevention of Collisions at Sea and shall keep as near to the outer limit of the channel which lies on her starboard side as is safe and practicable. Rule 9 does not apply outside the channel and craft may pass outside the buoys when and where it is safe to do so. If it is necessary to cross the channel, e.g. to enter area 3, crossing should be at right angles, at a position abeam of the E.S.B. Jetty (Berth 48).

Area 3 - No. 14 Buoy to the west

All small craft should pass along the south side of the channel, remaining as far as is practicable to that side.

General

All craft shall operate under power when within areas 2 and 3, but may additionally raise their sails outside the channel but not in the channel.

1. No sailing in the channel, craft should only cross at right angles when it is safe to do so.
2. Maintain a listening watch on channel VHF 12 and avoid unnecessary communication.

Keep a sharp lookout and keep clear of all shipping.

Attention of all skippers is drawn to the annual Notice to Mariners No. 7 concerning small craft.

Harbour Master

Collision Avoiding Check List

Avoid the busy shipping channels and routes. Cross them at right angles and as quickly as possible after checking that it is safe to do so. Recreational users of the port area are particularly requested to be familiar with the Int. Collision Regulations (particularly Rule 9), Dublin Port Bye Laws, Small Craft (Leisure) Regulations (see chartlet) and Local Notices to Mariners (particularly No.7). Information is also available on the Dublin Port web site, www.dublinport.ie.

Remember

- ✓ Keep a good lookout, particularly at night
- ✓ Do not under-estimate the speed of ships
- ✓ Be visible
- ✓ Watch the lights of other vessels
- ✓ Know the whistle signals
- ✓ Keep your VHF tuned to channel 12

Obey any instructions given by Dublin Port VTS. They are also interested in your safety.

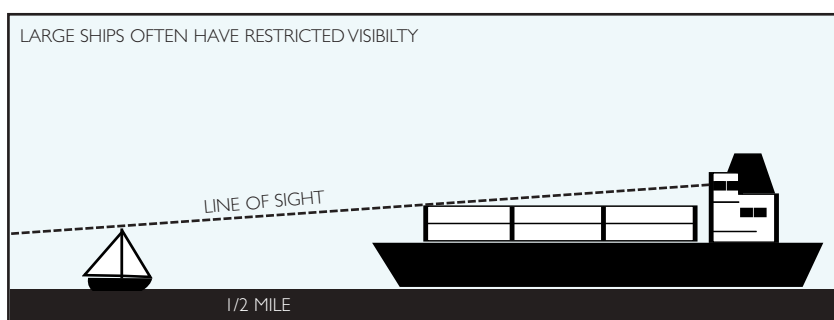
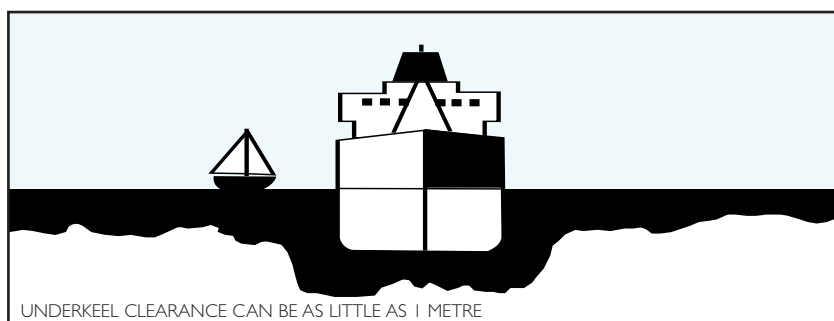
International Regulations for the Prevention of Collisions at Sea

Rule 9 - *Narrow Channels* (Excerpt)

- (a) A vessel proceeding along the course of a narrow channel or fairway shall keep as near to the outer limit of the channel or fairway, which lies on her starboard side as, is safe and practicable.
- (b) A vessel of less than 20 metres in length or a sailing vessel shall not impede the passage of a vessel which can safely navigate only within a narrow channel or fairway.
- (c) A vessel engaged in fishing shall not impede the passage of any other vessel navigating within a narrow channel or fairway.
- (d) A vessel shall not cross a narrow channel or fairway if such crossing impedes the passage of a vessel which can safely navigate only within such channel or fairway. The latter vessel may use the sound signal prescribed in Rule 34(d) or in doubt as to the intention of the crossing vessel.

Rule 10 - *Traffic Separation Schemes* (Excerpt)

- (i) A vessel of less than 20 metres in length or a sailing vessel shall not impede the safe passage of a power-driven vessel following a traffic lane.



MANOEUVERING AND WARNING SIGNALS

EXCERPT FROM RULE 34

These signals may be supplemented by light signals:

1 Short blast

—

Altering to starboard

2 Short blasts

— —

Altering to port

3 Short blasts

— — —

Going astern

5 or more short blasts

— — — — —

Keep clear